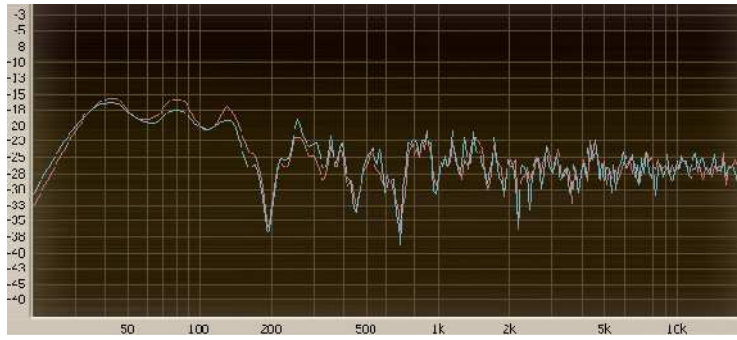


Original
Listener at 3m,
height 1.1m



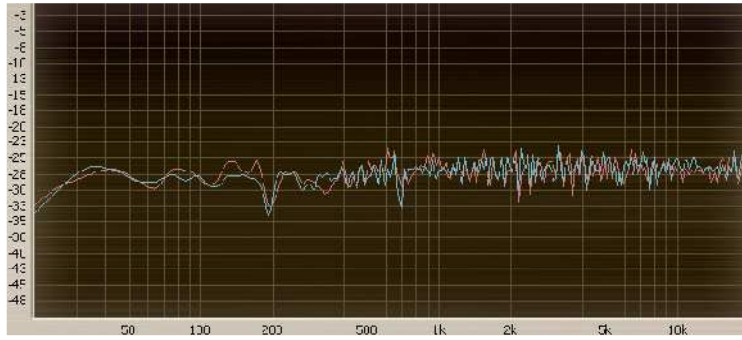
Measurements done with
The Final Cut
www.ohl.to

+13, -5dB
(5 biggest dips aren't counted)

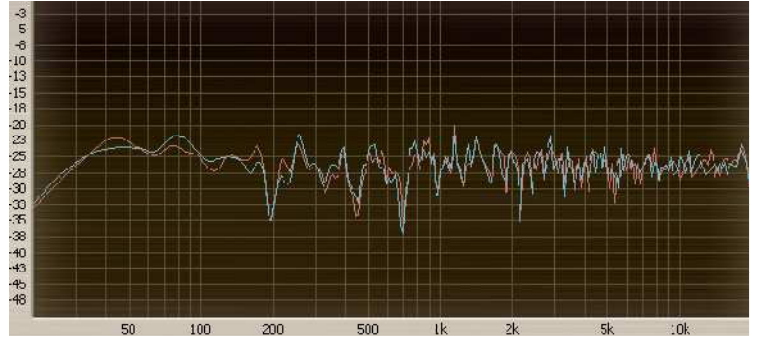
DRC Optimized (coeff = 0.92)

Listener at 3m, 1.1m

DRC TFC (coeff = 0.8)

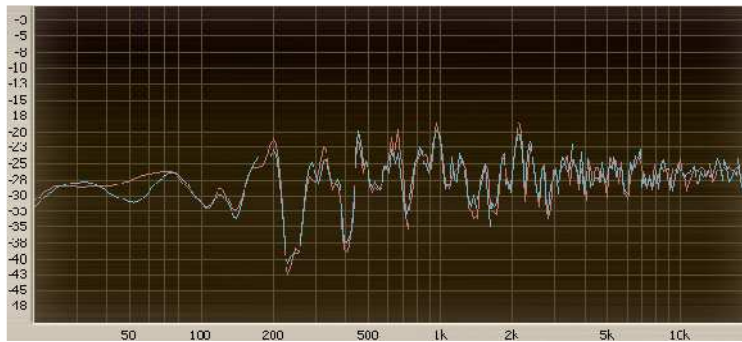


+4, -2dB

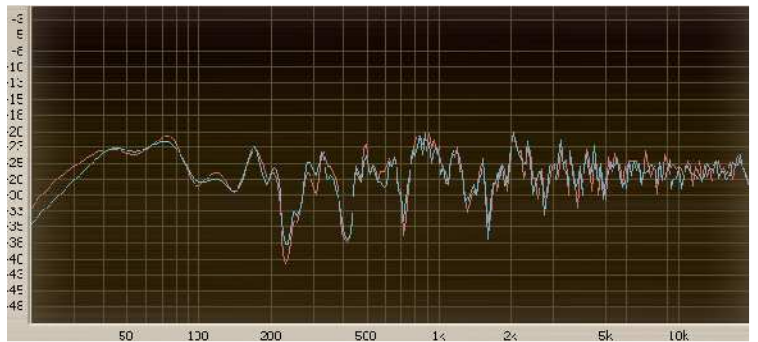


+6, -3dB

Listener at 3m, 1.6m

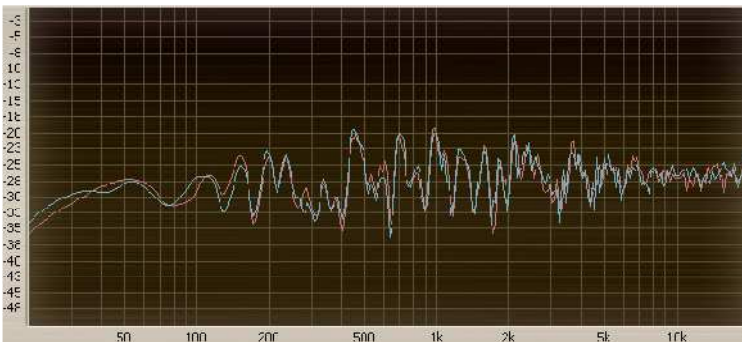


+9, -6dB

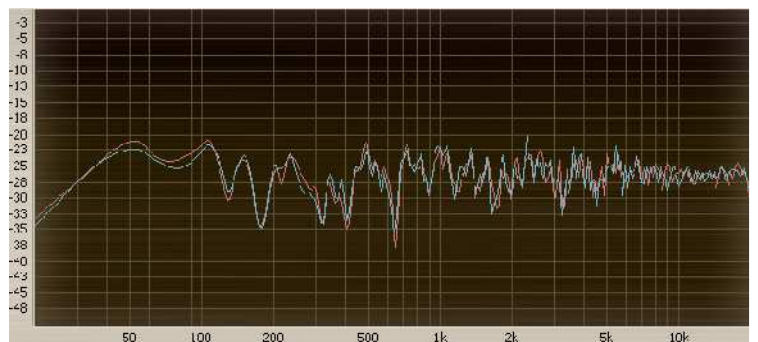


+7, -3dB

Listener at 2.5m, 1.1m

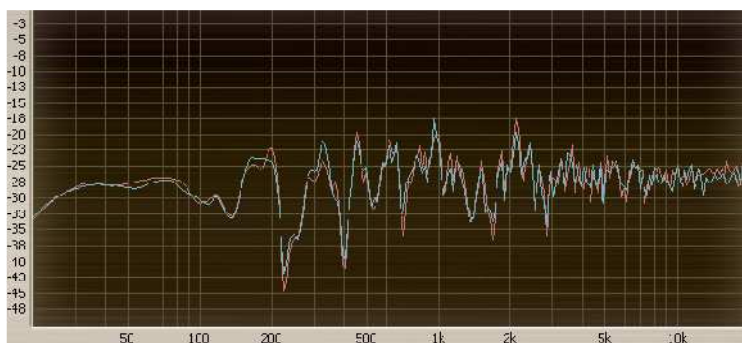


+8, -5dB

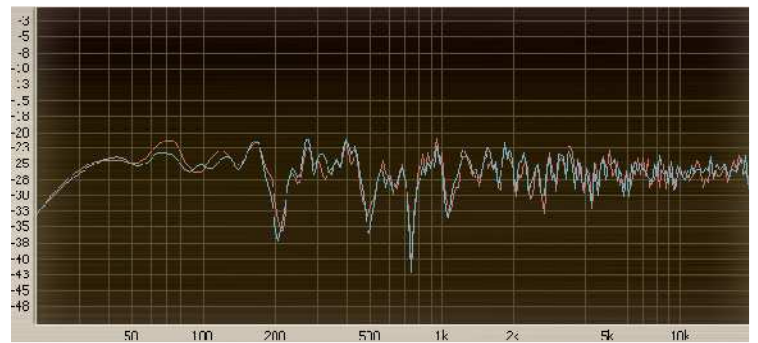


+7, -5dB

Listener at 3.5m, 1.1m



+10, -5dB



+6, -3dB